

GREEN CLEANING

BAYCO®

SOLUTIONS



**PLASTIC & POLYMER INDUSTRY
ELECTRIC MOTOR REWINDING
PAINT & POWDER COATING
PRECIOUS METAL RECLAIM
AUTOMOTIVE REMANUFACTURING**



Over 80 years of experience when it comes to exceeding our client's needs and expectations.



Trust Bayco to be your solution provider!

What makes Bayco the right choice is our factory trained sales representatives – we are a true one stop supplier. Our salesmen are 'hands-on', with significant technical skill and field experience. They will provide start-up training, field service and troubleshooting of all our product lines.

Bayco also boasts a full-time Technical Support and Customer Service Staff to assist our clients in a timely and efficient manner. Most technical support services are offered free of charge. Bayco products are sold, serviced and trusted in over 50 countries worldwide. We are your trusted source for Curing and Heat Cleaning Ovens! We can also provide a complete line of distributed products for Industrial and Automotive applications.



APPENDIX

- | | | |
|---------------------------------------|---|-----------------------------------|
| 1... Appendix & About Bayco by Guspro | 7... The Bayco Advantage Diagram & Stacks | 12... Custom Ovens |
| 2 - 5... CB & CB2 Oven Features | 8 - 10... Oven Features | 13... Armature Stripping Oven |
| 6... Bayco BB Burnoff Oven Series | 11... BB Series Specifications | 14... Guspro Distributed Products |

NEW!

BAYCO CB & C2B CURING OVEN SERIES

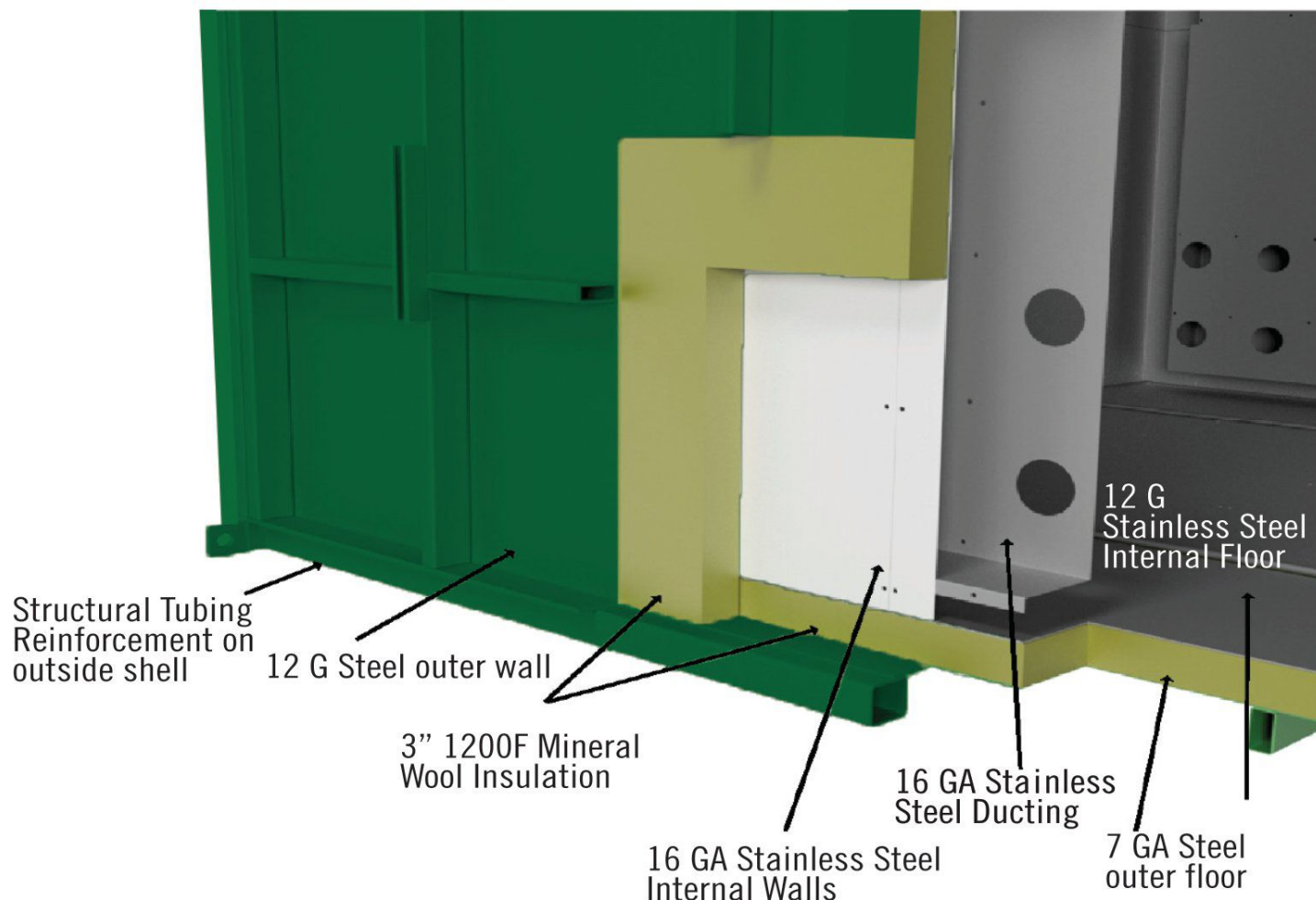
www.BAYCOOVENS.com

New to the Bayco lineup, our Bayco CB & C2B Curing Oven Series offers the same quality and robustness as our Bayco Heat Cleaning Ovens - giving you more of a Bayco advantage!

Our most common curing oven applications are found in the following industries:
paint & powder coating, automotive remanufacturing and electric motor rewinding.

CONSTRUCTION

- Oven exterior is 12 gauge steel, with internal walls and ducting made of 16 gauge stainless steel.
- Doors are equipped with safety type explosion door lock system
- The oven itself has pop-up explosion lids designed to pop under pressure ahead of the door lock explosion system
- The walls are insulated with 3" of 1200 deg F rated mineral wool insulation encased between the inner and outer steel wall
- The exterior is painted industrial green, interior is coated in mastic
- C2B door completely sealed to eliminate odours through cart tracks



NEW!

BAYCO CB & C2B CURING OVEN SERIES

www.BAYCOOVENS.com

OVEN CART

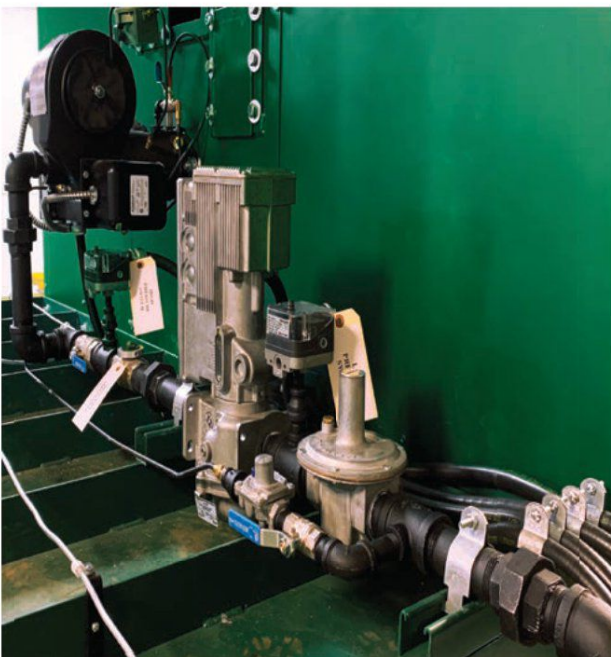
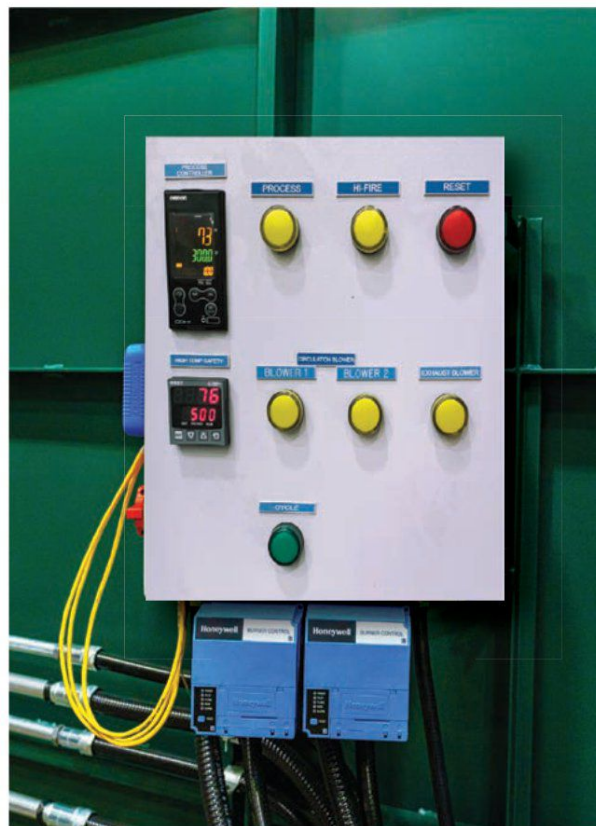
All Bayco curing ovens come with a cart designed to fold out of the way to close and seal the oven door / chamber

CONTROLS

Programmable process controller allows for multistage ramps and soaks. High temperature controller provides redundant safety to shut down oven if required

BAYCO ADDED FEATURES

- Our CB/ C2B are designed for gas or propane
- Burners and blowers are mounted on the rear wall of the CB model and C2B has its own heater box design
- Full adjustments on all heavy duty components, including fresh air intake and exhaust as well as tuning the process chamber.



BURNERS

The propane / gas burner is equipped with an integral blower with a continuous pilot, automatic spark ignition and high/low modulation. The electronic manual reset flame safety system includes pre purge timing, air flow proving, non-recycling 4 second proof of pilot and a .8 second shutdown after flame failure.

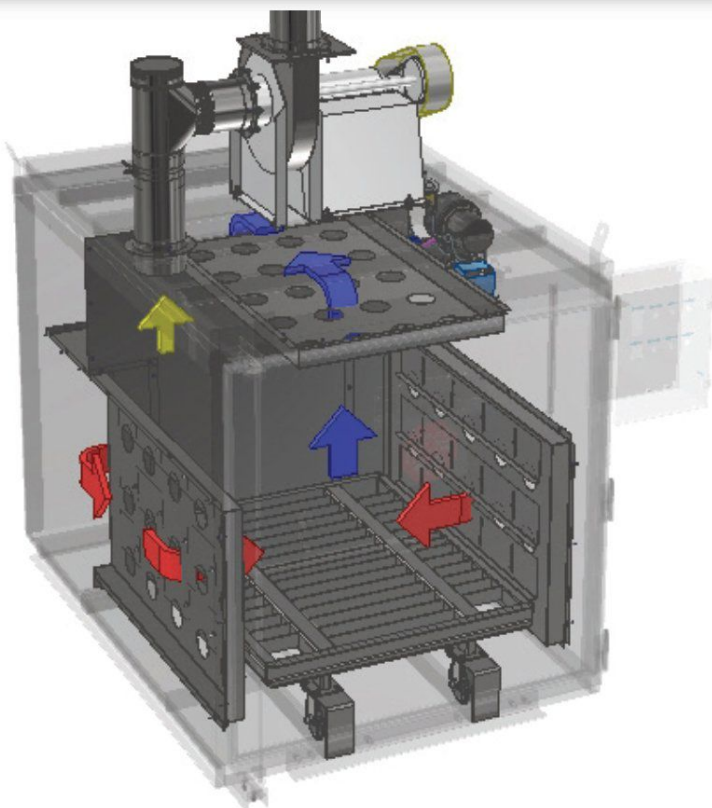
NEW!

BAYCO CB & C2B CURING OVEN SERIES

www.BAYCOOVENS.com

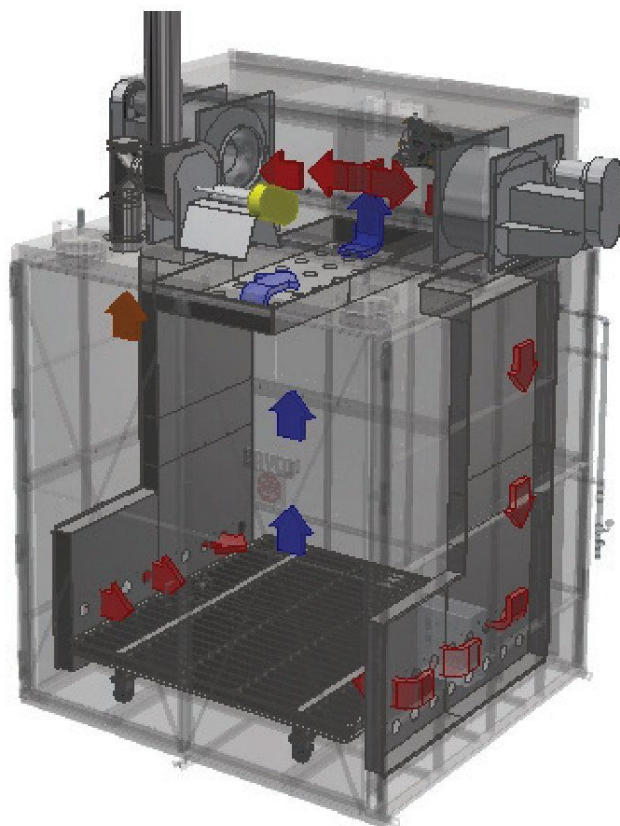
HIGH VOLUME CIRCULATION

Hot air circulates through the system at a rate which guarantees a regular rotation of air volume per minute. Balanced horizontal and vertical airflow assures uniformity in the process.



HIGH VELOCITY PENETRATION

High velocity air delivered via the side ports break through boundary layer air, driving heat into and through the load. This provides minimum time to bring the load to temperature, providing faster production cycles while reducing energy usage.



MANUFACTURERS OF WORLD-CLASS HEAT CLEANING SOLUTIONS

BAYCO CB SERIES SPECIFICATIONS

www.BAYCOOVENS.com

GUSPRO CB SERIES SPECIFICATIONS

Model	Useable Over Cart Dimensions Internal Clear Dimensions (in.)			Circulating System	Exhaust System		Burner	Stack dia	Cart Capacity	Fuel Requirements	
	Width	Depth	Height	CFM	Gal/batch	ACFM	BTU/hr	Inches	Lbs	Max (CFH)	Avg (CFH)
<i>CB Series</i>											
CB404836	40	48	36	2000	1/4	250	350,000	7	2,900	350	210
CB484848	48	48	48	2000	1/4	250	350,000	7	2,900	350	210
CB606060	60	60	60	4000	1/2	500	500,000	8	6,400	500	250
CB727272	72	72	72	7000	1/2	500	500,000	8	6,400	500	300
CB848484	84	84	84	10000	3/4	750	750,000	10	9,600	750	450
<i>C2B Series</i>											
C2B969696	96	96	96	12000	1	1000	750,000	10	9,600	750	450
C2B120120120	120	120	120	14000	1-1/2	1500	1,000,000	12	12,800	1000	600

"X" indicates model with legs for workbench height

Specifications are subject to change without notice.* Design Load based on load that can be brought up to cleaning temperature in under one hour.

Ask Us About Our
Bayco BP Coffin-Style Series

1-888-6-GUSPRO

BAYCO BB BURNOFF OVEN SERIES

www.BAYCOOVENS.com

HEAT CLEANING PROCESS

(CONTROLLED PYROLYSIS)

- Product is cleaned using heat that rises from the firebox chamber to process the load at an evenly controlled temperature. Coatings thermally degrade into a dry dust that requires no special disposal.
- All toxic fumes are contained in the process chamber and flow directly into the afterburner for destruction. Stack emissions are free of harmful pollutants.

OVEN STRUCTURE

- Heavy-duty design includes large capacity afterburner and self-supporting stack. Requires no rain cap.
- Built with 12 gauge hot rolled steel, 2"x 3" steel tubing and 1/4"x 3" flat bar framing with 4 layers of protection

LAYER 1

12 gauge steel is coated with chemical resistant MASTIC

LAYER 2

2" block insulation rated @ 1200 deg F / 650deg C

LAYER 3

1/2" Ceramic Board rated @ 2300 deg F / 1250 deg C

LAYER 4

Second layer of Ceramic board the same as Layer #3 only installed offset to overlap the seams and improve heat retention. BAYCO ovens are COOL TO THE TOUCH.

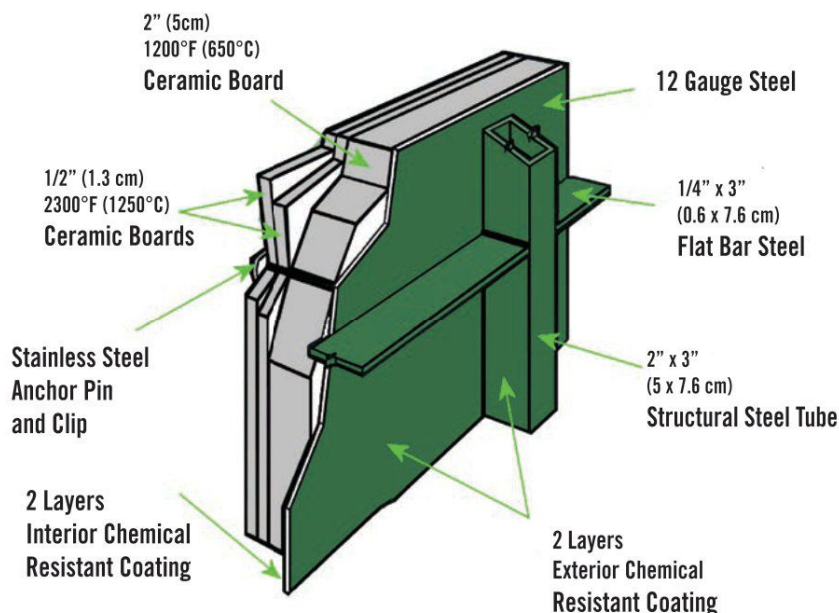
GREEN FOR THE ENVIRONMENT

(GREEN FOR YOUR WALLET)

- Heat Cleaning is a safer and more cost effective cleaning process compared to using abrasive media or harsh solvents. Get rid of the added costs and liability associated with hazardous waste disposal.

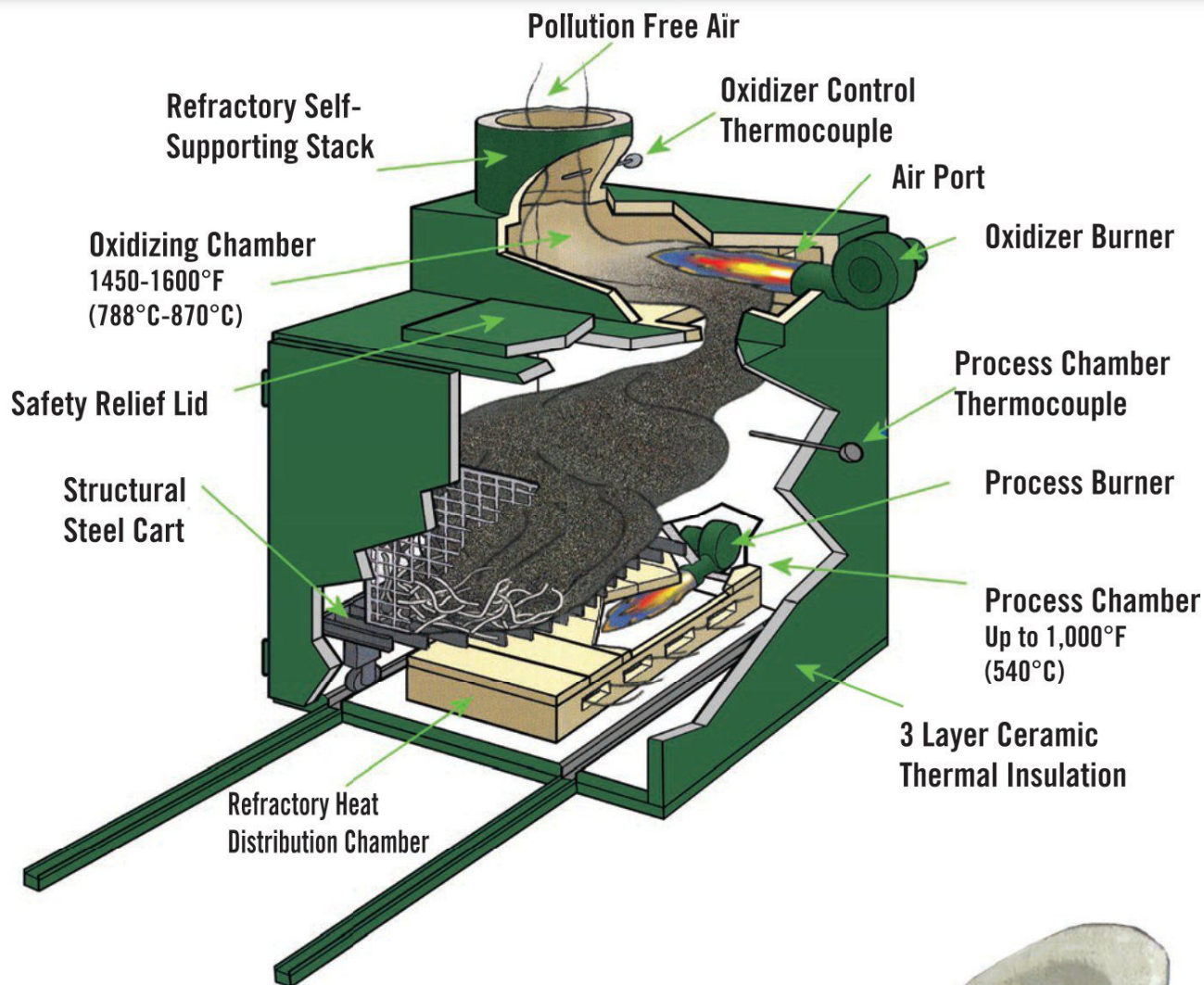
PRODUCT SAFETY

- Heat Cleaning does not allow any direct flame impingement with the product. Heat flows evenly throughout the load to bring the product to temperature.
- Temperatures are accurately controlled to prevent over-heating using Microprocessor-based digital controllers and redundant over-temperature safeties.
- Heat rises naturally: our bottom firebox design ensures even heat distribution throughout the load and an efficient cleaning process.



The BAYCO Advantage

www.BAYCOOVENS.com



STACKS

- Refractory lined to withstand 2000° F (1100°C).
- Full height and self-supporting designed to function WITHOUT a rain cap.
- Natural draft stack draws at a consistent negative pressure - ensuring optimal temperature control



HINGED CART TRACK EXTENSIONS

- Doors seal completely to eliminate smoke and odours through the cart tracks.
- Reduce cold spots at the front of the oven.
- Allows better control of the amount of oxygen getting into the process chamber.



V-GROOVED CART WHEELS WITH HINGED CART TRACKS

- Carts are easier to roll in and out.
- The V-grooved wheels on ¾" diameter rod rides up off the ash and debris falling off the processed product.



HIGH/LOW MODULATING PROCESS

- Eliminates vapour build up in the process chamber.
- The continuous burner eliminates re-ignition failures during cycle.
- Added safety features include a lockout flame safety, low gas pressure switch, low water pressure switch and air pressure switch.
- High/Low feature provides a tighter temperature control in the process chamber.

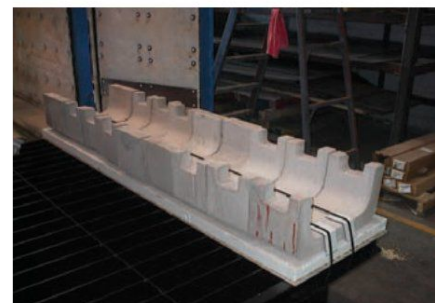
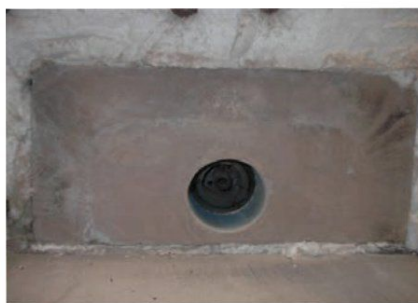


OVEN FEATURES

www.BAYCOOVENS.com

MODULAR U-SHAPED FIREBOX

- Easy to repair or replace.
- Longer life U-shaped tiles are cast from acid resistant refractory.
- Stocked for both new oven orders and aftermarket sales.
- Oven floors are poured flat.
- No firebox forms to setup, grease and disassemble.
- Firebox repairs and down time are reduced.
- Simpler do-it-yourself repair for old BAYCO ovens..

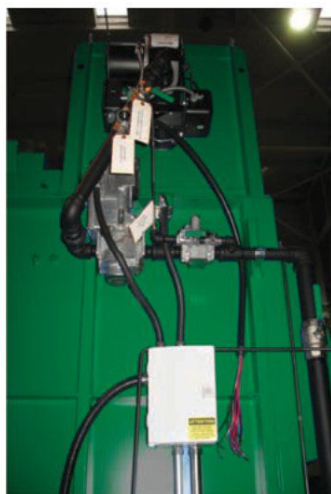


HIGH/LOW MODULATING OXIDIZER

- Replaces previous high/low loop designs, reducing the number of components that can fail.
- Low fire adjustments are internal to the actuator preventing inexperienced hands from experimenting.
- Older BAYCO ovens can be easily upgraded by simply replacing the valve body and actuator.
- Added safety features include a lockout flame safety, low gas pressure switch and air pressure switch.



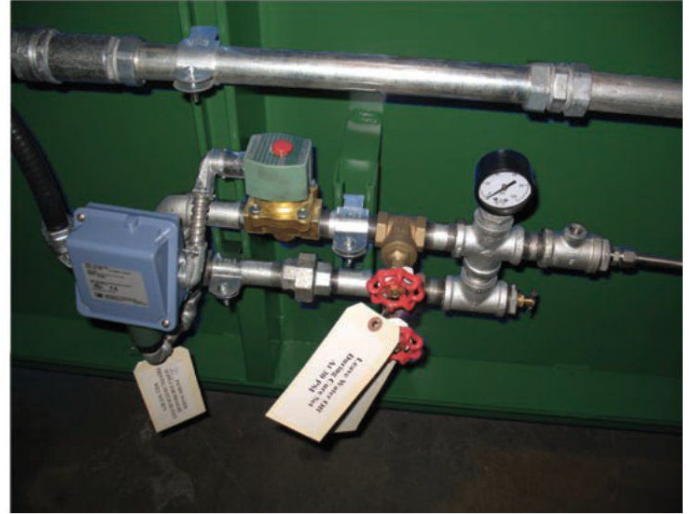
Old Style High/Low Loop



New Style High/Low Actuator

OTS (OVER TEMPERATURE SUPPRESSION SYSTEM)

- The OTS system incorporates a safety low water pressure switch and a manual bypass valve.
- In the event that water pressure is lost, the low water pressure switch will shut down the process burner. The oxidizer will continue to process any off gassing from the product and eliminate any environmental concerns.
- The manual by-pass allows for activation of the OTS system.
- The design is compact and will fit onto current pursley arrangements.



ELECTRIC DOOR LOCK

- The GO-112-RA electric door lock system requires 400 lbs of force to open.
- It can be installed in large and small style ovens. It requires less conduit and electrical wiring than most electrical door locks making it quicker and easier to install.
- Since there is no cutting and welding required it is great for after market installations.
- It can be temperature driven and set to customers desired level of safety.



STANDARD OR HEAVY DUTY CARTS

- All BAYCO ovens equipped with heavy duty cart rated to a minimum 8,000 lb capacity
- Special high temperature and extra heavy duty load applications also available.

Standard Oven Models

www.BAYCOOVENS.com

BB SERIES SPECIFICATIONS

Model (BB Series)	Usable Over Cart Dimensions Inside Clear Dimensions (in.)			Inside Dimensions (in.)			Design Load* Capacity (lbs)	Cart Load Capacity (lbs)	Thermal Oxidizer Capacity (lbs/hr)	Fuel Requirements 6 - 8" WC Natural Gas		Approx. Shipping Weight (lbs/Kg)
	Width	Depth	Height	Width	Depth	Height				Max. CFH	Average Usage CFH	
242424X	24	24	24	30	30	38	800	2,900	10	400	240	3700 / 1680
363636X	36	36	36	42	42	50	1,000	2,900	17	550	330	6600 / 3000
402420X	40	24	20	46	30	34	1,000	2,900	13	550	330	5500 / 2500
404836	40	48	36	46	54	48	1,500	2,900	21	700	420	7650 / 3470
484848	48	48	48	54	56	75	3,000	2,900	30	1,250	800	8000 / 3630
484060	48	40	60	54	48	87	3,000	2,900	30	1,250	800	8500 / 3850
484072	48	40	72	54	48	99	3,000	6,400	40	1,250	800	9250 / 4200
484084	48	40	84	54	48	111	3,000	6,400	40	1,250	800	10000 / 4550
606060	60	60	60	66	68	87	4,000	6,400	50	1,500	900	10800 / 4900
607272	60	72	72	66	80	99	4,000	6,400	50	1,500	900	11900 / 5400
607284	60	72	84	66	80	111	4,000	6,400	50	1,500	900	12500 / 5670
727272	72	72	72	78	80	99	5,000	6,400	55	2,000	1,200	12700 / 5760
727284	72	72	84	78	80	111	5,000	6,400	55	2,000	1,200	12900 / 5860
727296	72	72	96	78	80	123	5,000	6,400	55	2,000	1,200	13100 / 5960
7272100	72	72	100	78	80	127	5,000	6,400	55	2,000	1,200	13200 / 5990
729672	72	96	72	78	104	99	6,000	9,600	55	2,000	1,200	13200 / 5990
7212072	72	120	72	78	128	99	6,000	12,800	55	2,000	1,200	15000 / 6800
969696	96	96	96	102	104	123	6,000	9,600	70	2,000	1,200	15900 / 7215
9612096	96	120	96	102	128	123	6,000	12,800	70	2,000	1,200	16800 / 7620
120120120	120	120	120	126	128	147	6,000	12,800	70	2,000	1,200	20850 / 9460

"X" indicates model with legs for workbench height

Specifications are subject to change without notice.* Design Load based on load that can be brought up to cleaning temperature in under one hour.

Ask Us About Our
Bayco BP Coffin-Style Series

1-888-6-GUSPRO

1-888-6-GUSPRO

CUSTOM OVENS

www.BAYCOOVENS.com



BAYCO Sells Solutions.

We can engineer and build any custom oven to your exact specifications. Heavy duty applications, conveyer systems, alternative fuels, etc. We can help!



APPLICATIONS

8000 HP, 13800V Motor

RESULTS

20 Hour Cycle in Our Oven

CUSTOMER

Inman Electric (Lasalle, IL)

SOLUTION

G0144144144 Burn Off Oven



MANUFACTURERS OF WORLD-CLASS HEAT CLEANING SOLUTIONS.

Armature Stripping Oven

www.BAYCOOVENS.com

GUSPRO BB-45A

The Guspro Model BB-45A Armature Stripping Oven follows the proven two burner designs of Guspro's heavy duty "BB" series ovens. Armature windings are heat stripped without removal or damage of the commutator. The BB-45A has a single swing door and electrically operated roof opening lid for fast, safe vertical loading with the commutator in the down position. A stator grid is included for alternative use in batch heat cleaning stators. The commutator is protected from heat and kept below 212°F in the lower water cooled chamber.

HEAT CLEANING BENEFITS

- Emergency jobs can be processed quickly.
- Controlled burnout and commutator cooling protects parts.
- Cycle times of 2 to 4 hours minimize job turnaround.
- Labour is minimized, fuel conserved, and profits increased..

ENVIRONMENTAL APPROVAL

BAYCO by Guspro ovens meet EPS (USA) and Ministry (Canada) air approval standards for emissions

EFFICIENT POLLUTION CONTROL

Fuel is conserved with the two burner design, as the process chamber benefits from the radiant heat of the oxidizer chamber. The well-insulated primary chamber requires little fuel from its burner after reaching temperature.

SAFE, SIMPLE, AUTOMATIC OPERATION

A programmable controller automatically controls the oven throughout the full cycle without operator attendance. Once load is complete the process controller will automatically shutdown the entire oven.

The adjustable commutator support plate and adjustable upper shaft support frame permits fast setup and easy one-man loading of small or large armatures. Water level control is included for precise adjustment of the commutator cool zone.



Guspro Distributed Products

www.BAYCOOVENS.com

GOODSON

Tools & Supplies for Engine Builders

GOODSON is the premier supplier of tools and supplies for engine builders, offering over 8,000 products! Whether you're working on the average automobile engine, a high-performance engine, or a small displacement engine, you'll find the engine building tools and supplies that you need at GOODSON.



OTW has answered the call with honing products and services that enable honing customers to improve production capacity and meet strict tolerances, even with the most difficult-to-machine materials and the most demanding applications. OTW has developed and delivered specialized honing solutions, including multi-diameter vertical honing machines and horizontal honing equipment, featuring the latest automated controls, tooling and abrasives - for nearly every honing industry and application.



CLEMCO manufactures a comprehensive line of air-blast equipment and accessories for cleaning, surface preparation, and finishing. Clemco's Explosives Containment Systems product line helps explosives manufacturers reduce costs, comply with DoD and life safety regulations, and improve productivity. Clemco designs and builds containment solutions offering the manufacturer a total solution for their manufacturing, quality, and safety needs. The ZERO brand offers the industry's preferred manual and automated blast cabinets. You'll find their versatile, industrial-quality manual blast cabinets in job shops, automotive rebuilders, and machine shops throughout the world.



The L.S. Starrett Company, founded in 1880, manufactures more than 5,000 variations of Precision Tools, Gages, Measuring Instruments and Saw Blades for industrial, professional and consumer markets. They are used in a broad range of manufacturing facilities as an essential part of metalworking, the manufacturing of durable goods, and for working with exotic materials and in a wide variety of traditional and newer industries such as electronics, aerospace, energy, and many others. Starrett products are sold throughout the United States and worldwide through distributors, dealers, retailers and online.

TUXCO

For over 77 years, Tuxco Corporation has proven itself as the global leader in hydraulic cylinder service equipment. Whether you're removing, installing, repairing, testing, or washing hydraulic cylinders, Tuxco enables your business to do it faster, safer, and more accurately.



CLEANING TECHNOLOGIES GROUP (formerly Blackstone~NEY)

CTG Ultrasonic part washers and ultrasonic cleaners provide the best alternative in cleaning equipment today. When you are looking for an ultrasonic cleaner to replace your industrial part washer, grease monkey automotive part washer or engine degreaser or if you want to upgrade your clean room solvent bench with a Multisonic ultrasonic generator, CTG Ultrasonics is your best source for the most advanced ultrasonic cleaners in the industry.



JenFab offers the most complete product offering of Automatic Solvent-Free Parts Cleaning Systems in the industry; from small spray cabinet parts washers to very large standard and custom designed spray cabinet parts washers, to immersion/agitation systems, and modular multi-stage in-line-flow-through belt systems. Systems are available in mild or stainless steel and can incorporate Wash/Rinse/Phosphate/Immersion/Dry into their batch or continuous feed pass through systems (Belt or Monorail systems available). JenFab can meet virtually any parts cleaning application.



KAR is a master distributor supplying measuring and cutting tools, machine tool accessories and other manufacturing related supplies across Canada's metal working industry. If you are turning, milling, grinding, drilling, or measuring they have what you need to keep your manufacturing business moving. Supplying the tools that help improve efficiency, repeatability in manufacturing and productivity for maintenance, repair and operations in business is their strength, supporting quality Canadian made products.



BAYCO

Repair & Service parts available for BAYCO & Guspro Ovens.

Upgrade kits are available to improve performance, efficiency, and environmental compliance.

Field service available for all BAYCO & Guspro Ovens.

Please contact us for more details.

CONTACT US

Tel: 519-352-4550

Fax: 519-352-7676

1-715 Richmond St. Chatham, ON Canada. N7M5J5

Toll Free in U.S & Canada: 1-888-6-GUSPRO (1-888-648-7776)

Guspro@guspro.com

WWW.BAYCOOVENS.COM